

EF3803F-64F User's Guide

Susei Electronics System Co., Ltd

First edition issued August, 2005

1. General Description

EF3803F-64F is a parallel writing unit to use to set to EFP-I.

Reading and writing data to MCU Renesas Technology 3803 series with built-in Flash memory are enabled by using EF3803F-64F.

IC socket for 64-pin 0.65mm pitch QFP (64P6N-A) is mounted on EF3803F-64F.

<Packing contents>

- 1) EF3803F-64F
- 2) Users guide (this manual)

Figure 1.1 shows the adapter appearance.

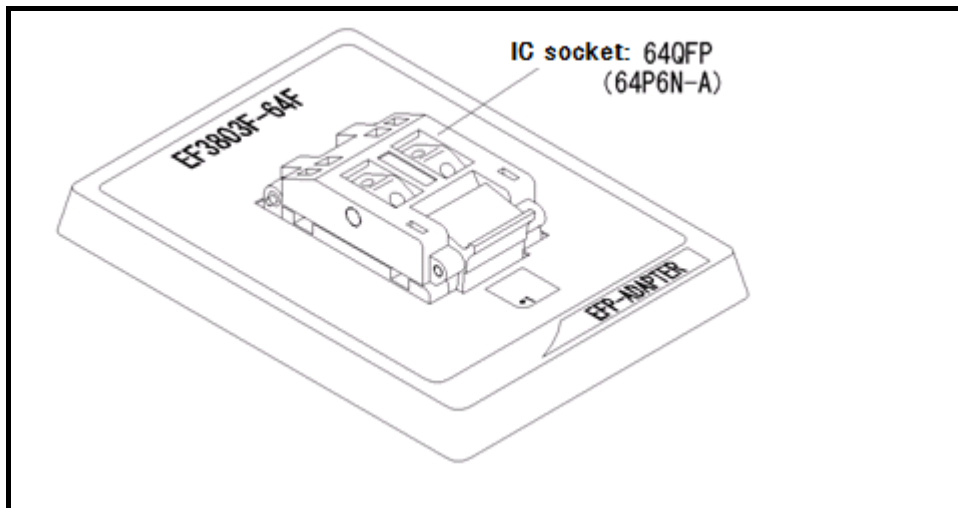


Figure 1.1: Appearance of EF3803F-64F

2. Insertion Direction of MCU and cleaning of IC socket

2.1 Insertion Direction of MCU

When MCU is inserted, No.1 pin of the IC socket on EF3803F-64F and MCU's No.1 pin should be connected. The Wrong insertion would cause a serious breakage of MCU.

Insertion direction of MCU is shown in Fig.2.1.

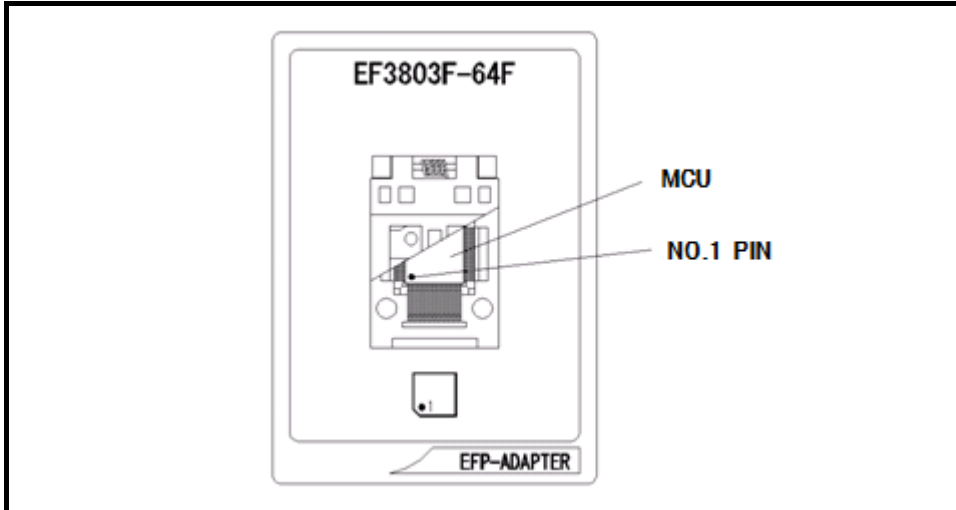


Fig.4.1 Insertion Direction of MCU

2.2 Cleaning of IC Socket

A contact pin inside of the IC socket of the MCU unit might deteriorate and a contact failure might occur because of the number of times used and its age of service. As the contact failure may cause incorrect writing of MCU and malfunction of the writer, please take the below measures.

Though enquiries on contact failures can be made, we regard IC sockets as consumable supplies. We may recommend you to replace them if a contact failure of IC socket occurs due to its use deterioration.

Measures against IC Socket Contact Failure

- (i) Please clean the contact pin surface inside of IC socket with a brush, etc. regularly, depending on the number of times used.
- (ii) If the product is not to be used for a long period, please keep it with less humidity in a plastic bag, etc.

【Recommended item for cleaning】

About the cleaning of the contact pin in the IC socket, we recommend the use of the nanotech brush (Kita Mfg Co., Ltd).

The nanotech brush can remove the dirt which stuck to a contact pin, a very small amount of metastasis of solder. When a contact poor problem occurred, please try it.

About nanotech brush, please ask us or Kita Mfg Co., Ltd (refer to the following site).

Nanotech brush (Kita Mfg Co., Ltd.) http://www.kita-mfg.com/pro_nanotech_e.html

3. List of Corresponding MCU and corresponding version

3.1 Corresponding MCU

A corresponding MCU list of EF3803f-64F is shown in Fig. 3.1.

Fig3.1 List of Corresponding MCU

MCU type	Memory type	Corresponding MCU name	Program memory area
M38xxxFFH (BOOT)	Flash memory	M38039FFHFP	E000h~FFFFh
M38xxxFFH (NORMAL)		M38049FFHFP	1000h~FFFFh

3.2 About Software version(S/W)

Please download the latest version up data on the following site when the S/W version.

Please use S/W of the latest version and confirm S/W version regularly.

【S/W version confirmation method】

The version numbers are displayed by [Help]→[About] in the WinEFP or WinEFP2 window menu.

< EFP-I/IM S/W the latest free download site >

http://www.suisei.co.jp/download_e/productdata_efp1_e.html

< EFP-S2 S/W the latest free download site >

http://www.suisei.co.jp/download_e/productdata_s2_e.html

< EFP-S2V S/W the latest free download site >

http://www.suisei.co.jp/download_e/productdata_s2_e.html

Note on Corresponding Versions

Above corresponding versions might change without notice on account of the future capability improvement, etc. Furthermore in case the upgrade procedure manual is attached when this product is purchased, please refer to that manual as a priority.

4. Erase Command

The erase type parameter contained in the erase command enables you to erase by block or erase all blocks. The erase command parameter input dialog is shown in Figure 4.1.

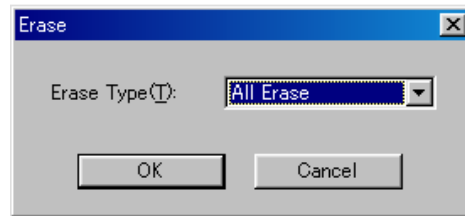


Figure 4.1: Erase Command Parameter Input Dialog

(1) Erase type

All Erase and block address area (xxxxxxh - xxxxxxh) are displayed in the drop-down list to the right of the erase type parameter display field (displayed by clicking the arrow pointing downward with the mouse). Select the block erase method.

(2) OK button

Execute erase command.

(3) Cancel button

Cancel the command.